

IF $\frac{3}{4}$ OF YOUR DRINK IS THE MIXER,
MIX WITH THE BEST™

Fever-Tree Mixers

PREMIUM INDIAN TONIC WATER

Uniquely fresh tasting with subtle and supportive citrus notes that are perfectly balanced by naturally sourced quinine.

REFRESHINGLY LIGHT TONIC WATER

By using fruit sugars, Fever-Tree have created a naturally sourced, low calorie tonic with 46% fewer calories.

ELDERFLOWER TONIC WATER

Soft, subtle flavours of freshly handpicked elderflower give a perfect balance to the tonic's natural quinine.

AROMATIC TONIC WATER

Made using South American angostura bark, perfectly balanced with sweet, spicy notes of cardamom, ginger, vanilla and pimento berry.

MEDITERRANEAN TONIC WATER

By using rosemary and lemon-thyme from the shores of Provence, Fever-Tree have created a unique tonic with a delicately sweet herbaceous taste.

SICILIAN LEMON TONIC WATER

Made with only the finest Sicilian lemons, using the 'sfumatrice' extraction method to produce a refreshing citrus taste.

GINGER ALE

Made with a blend of three rare and unique gingers to give an incredibly aromatic ginger ale.



FEVER-TREE



@fevertreemixers



fevertreemixers



fevertreemixers

www.fever-tree.com



drinkaware.co.uk
for the facts

the Plough on the Hill

Premium Gin & Tonic Menu

We prefer to pair all of our gins with Fever-Tree Premium Mixers. With their carefully selected naturally sourced botanicals and perfect carbonation, Fever-Tree mixers have been crafted to enhance the taste of the finest spirits.

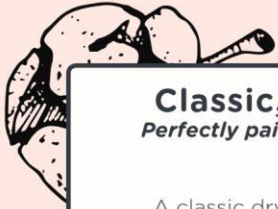


ploughontheM4



ploughonthehill

www.theploughonthehill.com 01793 740342



Classic, London Dry Style Gins

Perfectly paired with Fever-Tree Indian Tonic Water

ARKELLS

A classic dry gin distilled to celebrate Arkell's 175th Anniversary. Amongst traditional botanicals, hops from the brewery is used in distillation.

COTSWOLDS DRY GIN

With an exceptional mouthfeel, this well-balanced gin is non-chill filtered meaning it makes a beautifully cloudy G&T. Garnished with a slice of pink grapefruit.

RAMSBURY GIN

A classic London Dry with an up-to-date twist. This unique combination of savoury juniper and tart quince is both fresh and warming. Garnished with apple.

Fresh and Floral Gins

Perfectly paired with Fever-Tree Elderflower Tonic Water

GORDON CASTLE GIN

Mint, lavender and gooseberry are among the botanical selection, giving this crisp gin a floral, fresh palate. Garnished with a lime wedge.

HENDRICK'S GIN

Delightfully infused with cucumber and rose petal. Garnished with a slice of cucumber.

MARTIN MILLER'S GIN

Blended with pure Icelandic spring water, this gin has an exceptional clarity of taste with candied lemon and floral aromas. Garnished with sliced strawberries and cracked black pepper.

Ginger Serves

Perfectly paired with Fever-Tree Ginger Ale

BROCKMANS GIN

Juniper is complemented by unique blueberry and blackberry flavours that deliver a distinctive fruit taste. Garnished with blackberries and orange.

OPIHR GIN

Pronounced 'o-peer'. Strongly spiced with a warmth of black pepper and cubeb. Garnished with orange.

WARNER EDWARDS RHUBARB GIN

A big hit of rhubarb, soft citrus, pecans and caramel. This could easily be a sipping gin served ice cold. Garnished with rhubarb.

Sloe and Sweeter Gins

Perfectly paired with Fever-Tree Lemon Tonic Water

RIVES PINK GIN

Rather sweet with juicy strawberry notes front and centre. Garnished with strawberries and lemon.

Citrus and Herbaceous Gins

Perfectly paired with Fever-Tree Mediterranean Tonic Water

MARYLEBONE GIN

Citrus-forward, with a touch of sweet liquorice giving it depth. Garnished with lime.

MONKEY 47

47 botanicals make for an unrivalled complexity. Crisp with a sweet floral aroma. Garnished with grapefruit zest.

PORTOBELLO ROAD NO. 171

Portobello Road Gin eschews the trend for obscure and esoteric ingredients and instead is an honest blend of just nine botanicals. Garnished with a twist of pink grapefruit.

SIBLING GIN

Triple filtered for extra smoothness. Botanicals include vanilla, blueberry and orange. Thin slice of orange.

WARNER EDWARDS ELDERFLOWER GIN

Sweet notes of elderflower are gently enhanced with a crisp juniper hit. Garnished with lime.

WHITLEY NEILL BLOOD ORANGE GIN

A refreshing, intense orange aroma, with hints of liquorice and coriander. Garnished with orange.

WHITLEY NEILL RHUBARB & GINGER GIN

Subtly tart with clear rhubarb influence. A twist of orange sweetness and herbaceous coriander brings balance to the palate. Garnished with orange.

WINT & LILA GIN

Manufactured in the coast village of Puerto de Santa María, and aromatised with fine botanicals including orange blossoms, cinnamon, and peppermint. Garnished with an orange wedge.

**PREMIUM GIN AND FEVER-TREE
TONIC £6.50 PER 25ML**

